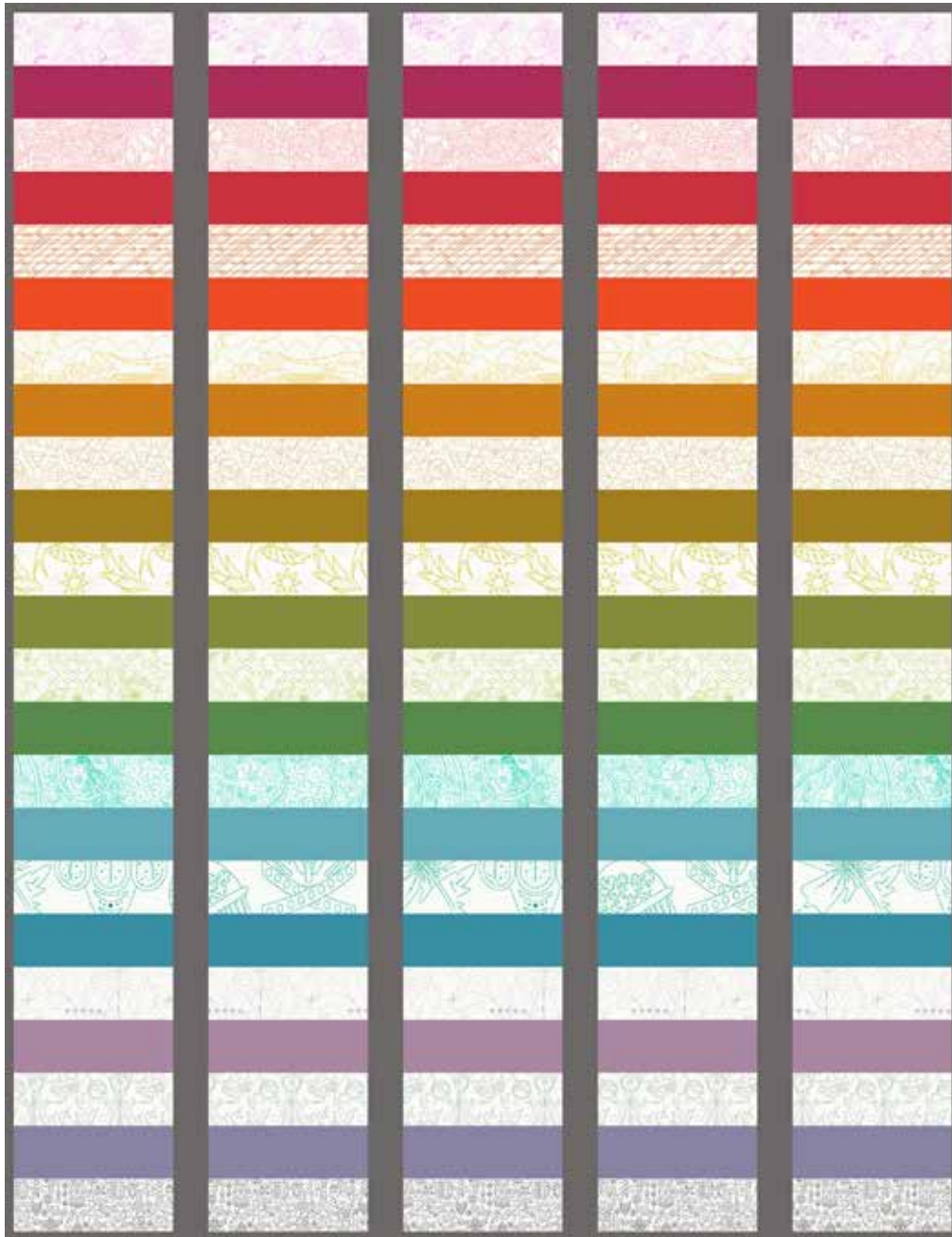


# Sun Print Light

BY ALISON GLASS



Sun Print Light Quilt designed by: **Alison Glass**  
Quilt Size: 53" x 69" • [andoverfabrics.com](http://andoverfabrics.com)

# Sun Print Light Quilt



Introducing Andover Fabrics new collection: **SUN PRINT LIGHT** by Alison Glass

Quilt designed by Alison Glass

Quilt finishes 53" x 69"

*What a fun way to use multiple fabrics with a color-wheel shift of hues. This is a perfect design for a first-time quilt maker, or for anyone who wants a satisfying project that is simple to make. It is just the right size for a throw or twin-bed topper.*

## Fabric Requirements

		Yardage		Fabric
<b>Fabric A</b>	sash, binding	1¼ yards		K-12-Charcoal
<b>12 Lights</b>	setting	fat ¼ yard each		
	8069-T	8070-E	8071-Y	*8073-C1
	8446-G	8450-R1	8482-G	8634-T
	8639-O1	8673-P1	8905-Y1	9036-K1
<b>11 Brights</b>	setting	fat ¼ yard each		
	K-12-Cosmos	K-12-Tomato	K-12-Carrot	
	K-12-Sunflower	K-12-Fern	K-12-Grass	
	K-12-Beetle	K-12-Dragonfly	K-12-Periwinkle	
	K-12-Hydrangea	K-12-Goldenrod		
<b>Backing</b>		3½ yards		*8073-C1

## Cutting Directions

**Note:** Read assembly directions before cutting patches. All measurements are cut sizes and include ¼" seam allowances. Sashes are cut the exact lengths required plus ¼" seam allowances. WOF designates the width of fabric from selvedge to selvedge (approximately 42" wide).

### Fabric A

Cut (8) strips 2½" x WOF, pieced to make the following:

(4) sashes 2½" x 69½" (Read Step 1.)

Cut (7) strips 2½" x WOF for binding

### 12 Lights

From each:

Cut (5) rectangles 3½" x 9½"

### 11 Brights

From each:

Cut (5) rectangles 3½" x 9½"

### Backing

Cut (2) panels 39" x 61", pieced to fit quilt top with overlap on all sides

## Making the Quilt

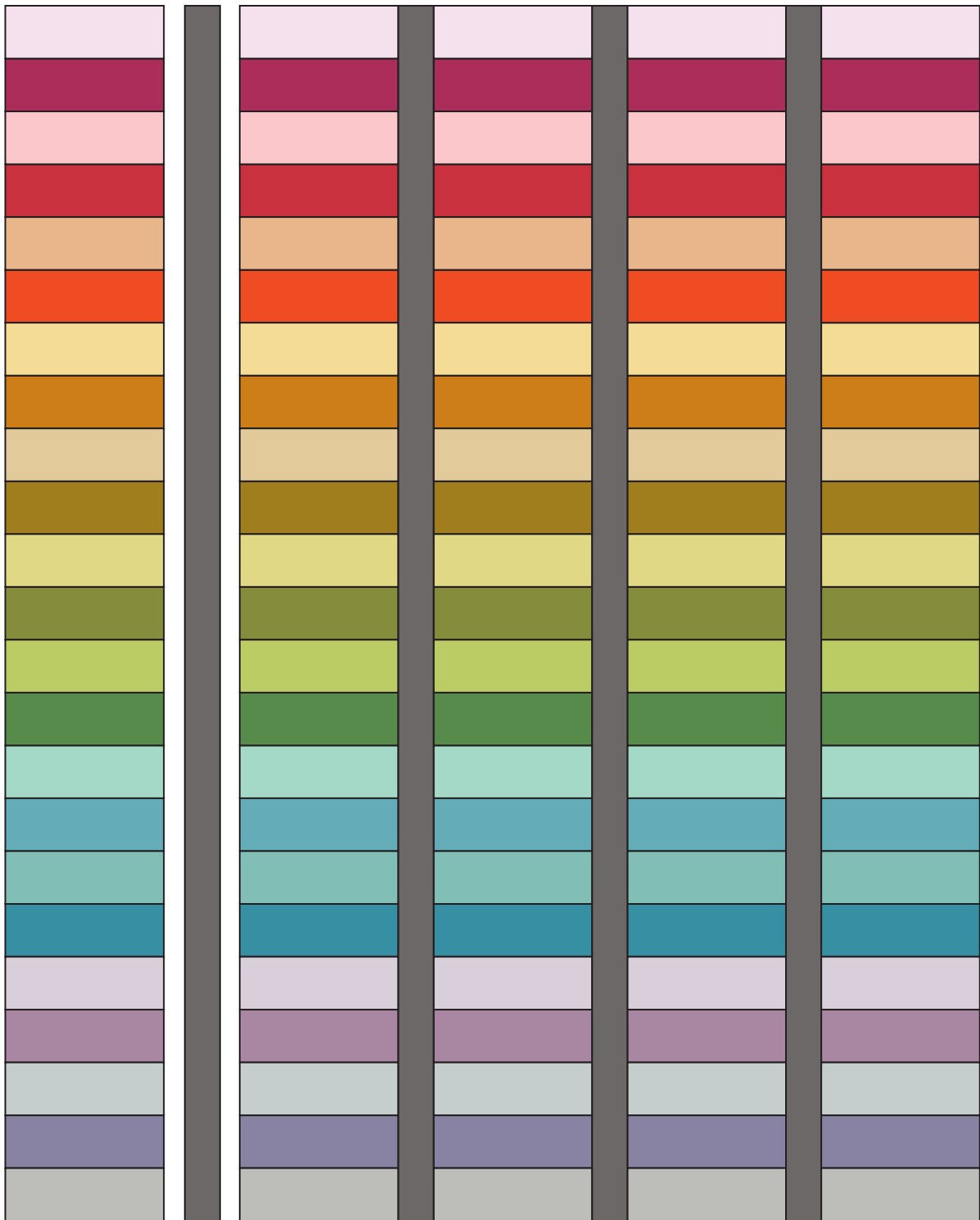
1. You may prefer to cut the sashes longer than needed (72"), and trim them later. Referring to the Quilt Diagram, position the rectangles in 5 vertical columns, alternating light and bright patches as shown. Follow the color arrangement or arrange the fabrics as you desire. Note that each fabric is used in the same position in every column so the colors align horizontally.
2. Once you are satisfied, join 12 light rectangles alternately with 11 bright rectangles to make a vertical row. Make 5 rows alike.
3. Join the pieced rows with the Fabric A sashes in between, being sure that the bright rectangles line up with one another in each column. Trim the gray sashes even with the top and bottom of the quilt if needed.

## Finishing the Quilt

4. Layer the quilt with batting and backing and baste. Quilt in the ditch around sashes and block patches. Or, quilt an overall design. Bind to finish the quilt.

# Sun Print Light Quilt

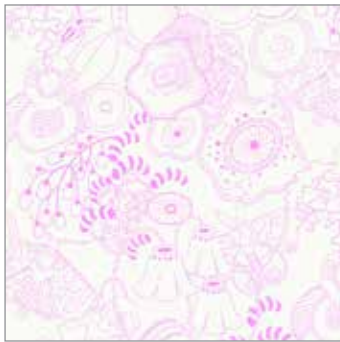
---



Quilt Diagram

# Sun Print Light

BY ALISON GLASS



8070-E



8450-R1



8639-O1



8071-Y



8905-Y1



8446-G



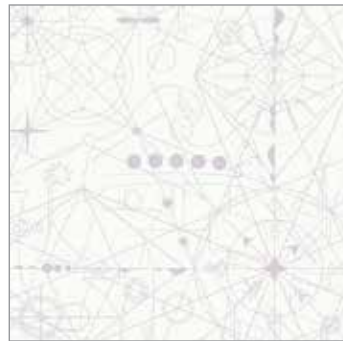
8482-G



8634-T



8069-T



8673-P1



8073-C1



9036-K1

Blend with fabrics from **Kaleidoscope** by Alison Glass



K-12-Cosmos



K-12-Tomato



K-12-Carrot



K-12-Sunflower



K-12-Goldenrod



K-12-Fern



K-12-Grass



K-12-Dragonfly



K-12-Beetle



K-12-Periwinkle



K-12-Hydrangea



K-12-Charcoal

All fabrics are used in quilt pattern. Fabrics shown are 25% of actual size.

andover : makower uk

Free Pattern Download Available

1384 Broadway New York, NY 10018  
Tel. (800) 223-5678 • andoverfabrics.com